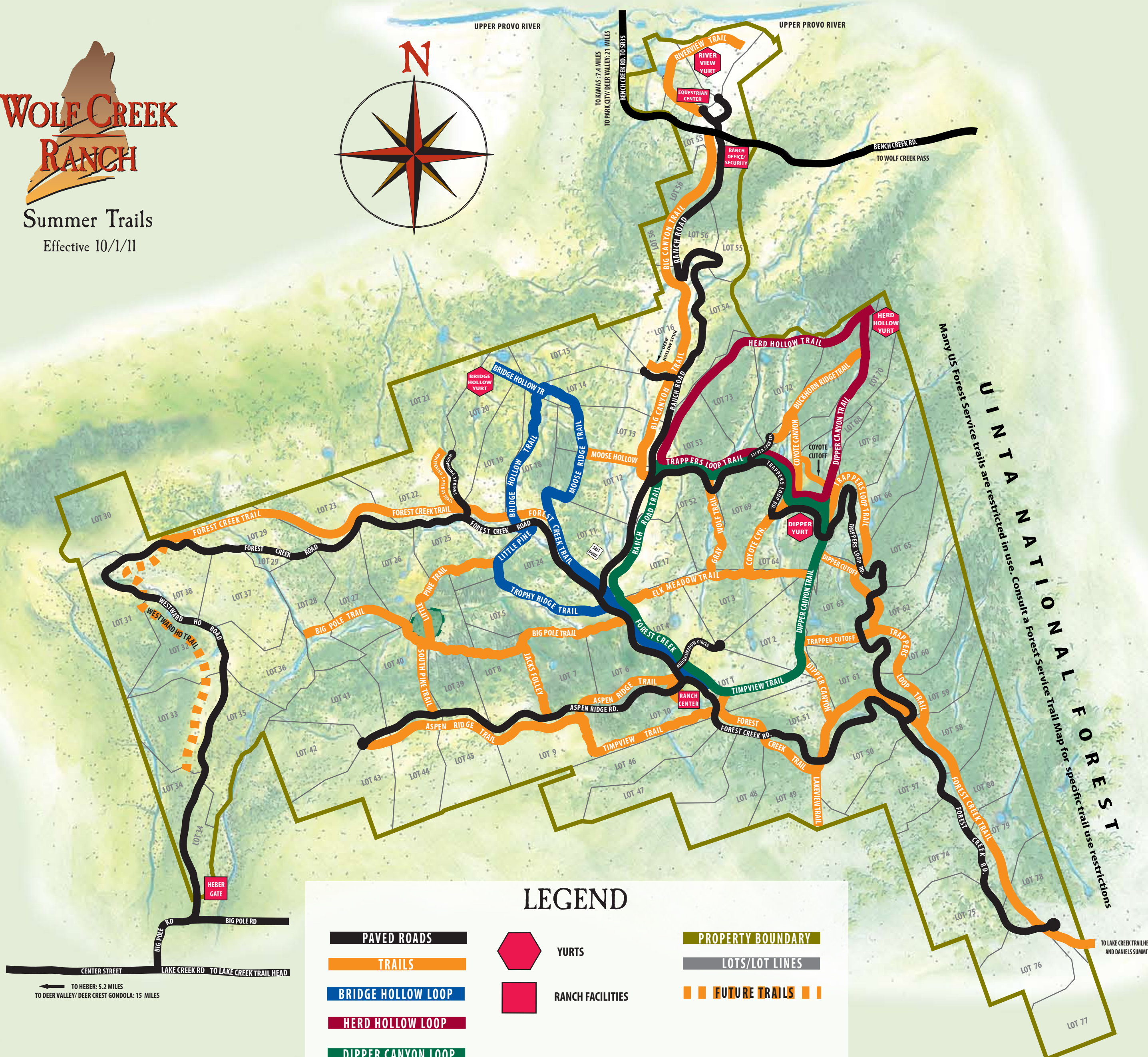


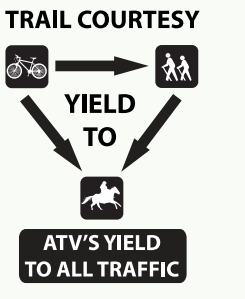


Summer Trails
Effective 10/1/11



LEGEND

PAVED ROADS	YURTS	PROPERTY BOUNDARY
TRAILS	RANCH FACILITIES	LOTS/LOT LINES
BRIDGE HOLLOW LOOP		FUTURE TRAILS
HERD HOLLOW LOOP		
DIPPER CANYON LOOP		



DIPPER CANYON YURT LOOP MILEAGE
6.2 Miles From/To Ranch Center

HERD HOLLOW YURT LOOP MILEAGE
7.2 Miles From/To Dipper Canyon Yurt
9.6 Miles From/To Ranch Center Excluding Trappers Loop

BRIDGE HOLLOW YURT LOOP MILEAGE
6.1 Miles From/To Trophy Ridge Trail Head
8.7 Miles From/To Ranch Center Via Forest Creek Trail

IMPORTANT NOTES

- GENERAL SAFETY:**
- This map is for informational and directional purposes only.
 - You are responsible for your trail safety and navigation.
 - Be aware, unmarked hazards may exist or present themselves at any time.
 - Be prepared for changing weather conditions with proper clothing, navigation, and survival equipment.
 - Leave an itinerary with Ranch Security before departing.
 - Do not light campfires except at approved fire pits and fireplaces at Yurts and Ranch Center.
 - Dogs must be under control and you must clean up their waste.
 - Pack out what you pack in: Leave No Trace, Leave No Litter.

- EQUESTRIAN TRAIL USAGE:**
- Helmets are recommended at all times.
 - Watch trails carefully for animal burrows and holes.
 - South Pine Trail is not suitable for horses and features a difficult bridge crossing.
 - Big Pole Trail above Jacks Folley has a technical, rocky, switchback.

- ATV TRAIL USAGE:**
- Helmets are recommended at all times.
 - On steep uphill, please use four wheel drive to minimize erosion and trail maintenance.
 - When trails are dry or wet, please go slow to minimize erosion, damage and dust generation.
 - During dry conditions, do not idle or park on high grass as the hot exhaust system of an ATV can spark a fire.
 - When passing horses, take great care not to spook them. When approaching head on, move to the side of the trail and shut off engine until horses are well past. When overtaking, wait until horses have stepped well clear of the trail and pass slowly until all ATVs are clear.
 - Slow down. Speed is a contributing factor in many ATV accidents. Follow the machine in front of you at a safe distance (no less than 3 seconds when passing a fixed point or object).
 - Slow down when approaching all corners, ridges and road crossings. Even if you do not have a blind spot, an oncoming machine may have one.
 - When riding with passengers, remember you now have the responsibility for yourself and for your passenger. You should not take risks while riding with a passenger.
 - An excellent safety tutorial for both experienced and inexperienced riders is available at www.ATVSafety.org.

- FISHING:**
- Dipper Yurt Pond, Bridge Hollow Yurt Pond, River View Pond and Ranch Center Pond are stocked annually. Please remember to catch and release.

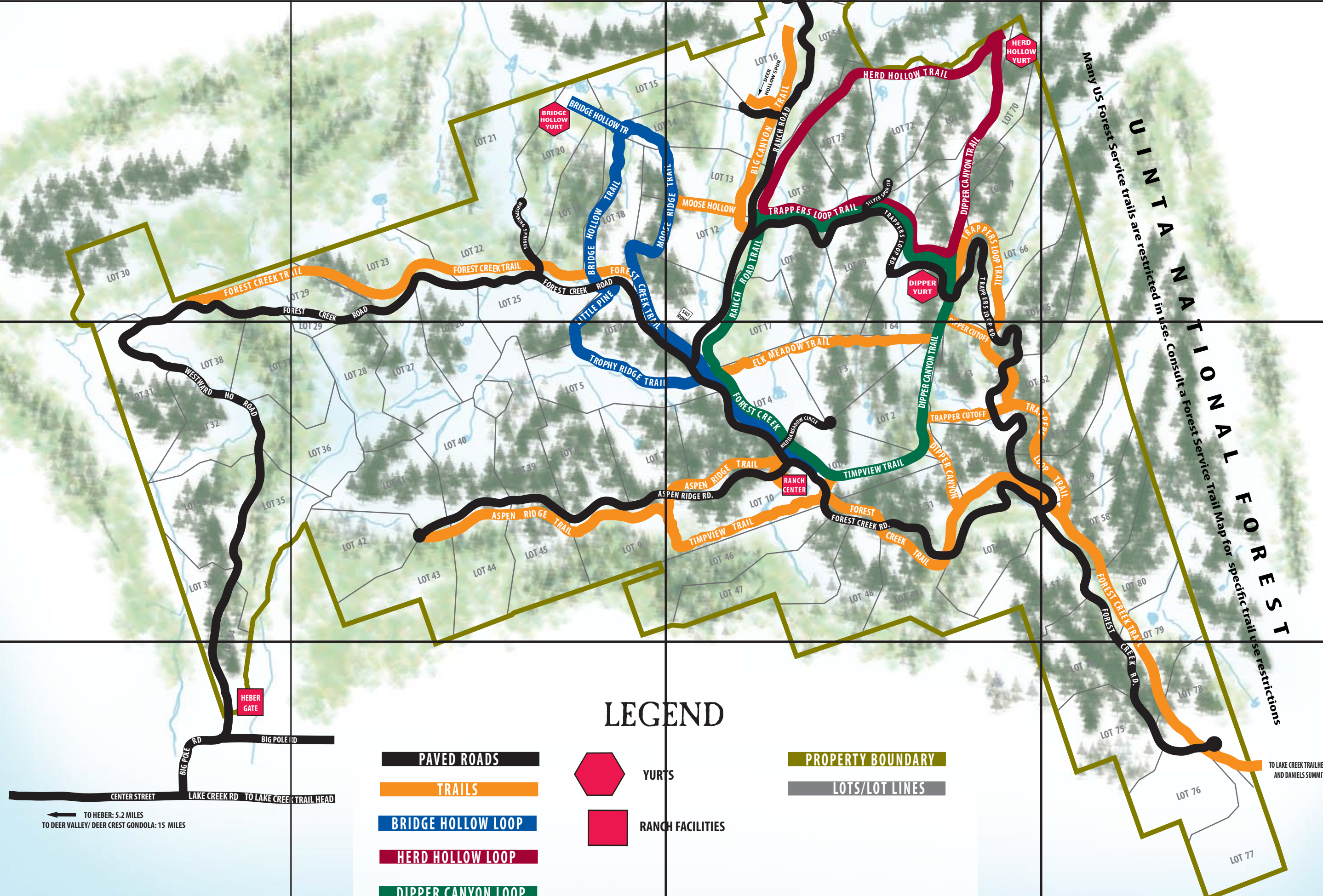
EMERGENCY CONTACT INFORMATION:

- 911 – Wasatch County (Eastern Forest Creek Road)
- Wasatch County Sheriff's Dept: (435) 654-1411
- Wolf Creek Security: (435) 783-6140
- Wolf Creek HOA Office: (435) 783-6666
- Wolf Creek Ranch Manager Home: (435) 785-2111
- Wolf Creek Ranch Center: (435) 785-6666
- Heber Valley Medical Center: (435) 654-2500
- Park City Medical Center: (435) 658-7000
- Wolf Creek Radio Private Frequencies: "Wolf Creek Security"

This map was created in collaboration with Graphix Solutions, Park City, Utah 2011



Winter Trails
Effective 10/1/11



LEGEND

- PAVED ROADS
- TRAILS
- BRIDGE HOLLOW LOOP
- HERD HOLLOW LOOP
- DIPPER CANYON LOOP
- PROPERTY BOUNDARY
- LOTS/LOT LINES
- YURTS
- RANCH FACILITIES

TO HEBER: 5.2 MILES
TO DEER VALLEY/DEER CREST GONDOLA: 15 MILES



- DIPPER CANYON YURT LOOP MILEAGE**
6.2 Miles From/To Ranch Center
- HERD HOLLOW YURT LOOP MILEAGE**
7.2 Miles From/To Dipper Canyon Yurt
9.6 Miles From/To Ranch Center Excluding Trappers Loop
- BRIDGE HOLLOW YURT LOOP MILEAGE**
6.1 Miles From/To Trophy Ridge Trail Head
8.7 Miles From/To Ranch Center Via Forest Creek Trail

- IMPORTANT NOTES**
- GENERAL SAFETY:**
- This map is for informational and directional purposes only.
 - Winter conditions can change rapidly. Check the weather before venturing out.
 - You are responsible for your trail safety and navigation.
 - Be aware, unmarked hazards may exist or present themselves at any time.
 - Be prepared for changing weather conditions with proper clothing, navigation, and survival equipment.
 - Leave an itinerary with Ranch Security before departing.
 - Do not light campfires except at approved fire pits and fireplaces at Yurts and Ranch Center.
 - Dogs must be under control and you must clean up their waste.
 - Pack out what you pack in: Leave No Trace, Leave No Litter.

- EQUESTRIAN TRAIL USAGE:**
- Helmets are recommended at all times.
 - Watch trails carefully for large drifts and hidden objects.
 - Stay on groomed trails.

- SNOWMOBILE TRAIL USAGE:**
- Helmets are required at all times. Goggles are recommended to prevent injury from twigs and flying debris.
 - THIN ICE WARNING:** The windmills installed at each pond aerate the water to enhance fish health. This aeration combined with snow cover (an insulator) can prevent the formation of a thick and stable ice layer. Be aware of pond locations and assume all Ranch ponds will always have unsafe ice conditions.
 - Always carry a shovel and tow strap. Be prepared for a breakdown.
 - On steep slopes, or when venturing into the National Forest, be aware of avalanche hazards. Travel with transceivers and avalanche survival gear.
 - Slow down. Speed is a contributing factor in many snowmobile accidents. Follow the machine in front of you at a safe distance (no less than 3 seconds when passing a fixed point or object).
 - Slow down when approaching all corners, ridges and road crossings. Even if you do not have a blind spot, an oncoming machine may have one.
 - When riding in a group on trail, ride single file.
 - Be aware that unmarked hazards may exist just below the snow surface. Tree stumps, rocks, creek beds and fences often disappear under our deep snows.
 - Respect private property. Do not venture off trail or use private trails.
 - When riding with passengers, remember you now have the responsibility for yourself and for your passenger. You should not take risks while riding with a passenger.
 - An excellent safety tutorial for both experienced and inexperienced riders is available at www.snowmobilers.org.

- EMERGENCY CONTACT INFORMATION:**
- 911 – Wasatch County (Eastern Forest Creek Road)
 - Wasatch County Sheriff's Dept: (435) 654-1411
 - Wolf Creek Security: (435) 783-6140
 - Wolf Creek HOA Office: (435) 783-6666
 - Wolf Creek Ranch Manager Home: (435) 785-2111
 - Wolf Creek Ranch Center: (435) 785-6666
 - Heber Valley Medical Center: (435) 654-2500
 - Park City Medical Center: (435) 658-7000
 - Wolf Creek Radio Private Frequencies: "Wolf Creek Security"

This map was created in collaboration with Graphix Solutions, Park City, Utah 2011